



MULTIPANELUK^{LTD}

a multitude of applications

The ALUPANEL range provides a selection of aluminum composite material panels whose rigidity and versatility make them ideal for use in TV, movie and theatre set building as well as making props, furniture and scenery.

Wide range of
colors & finishes

Rigid yet
Lightweight

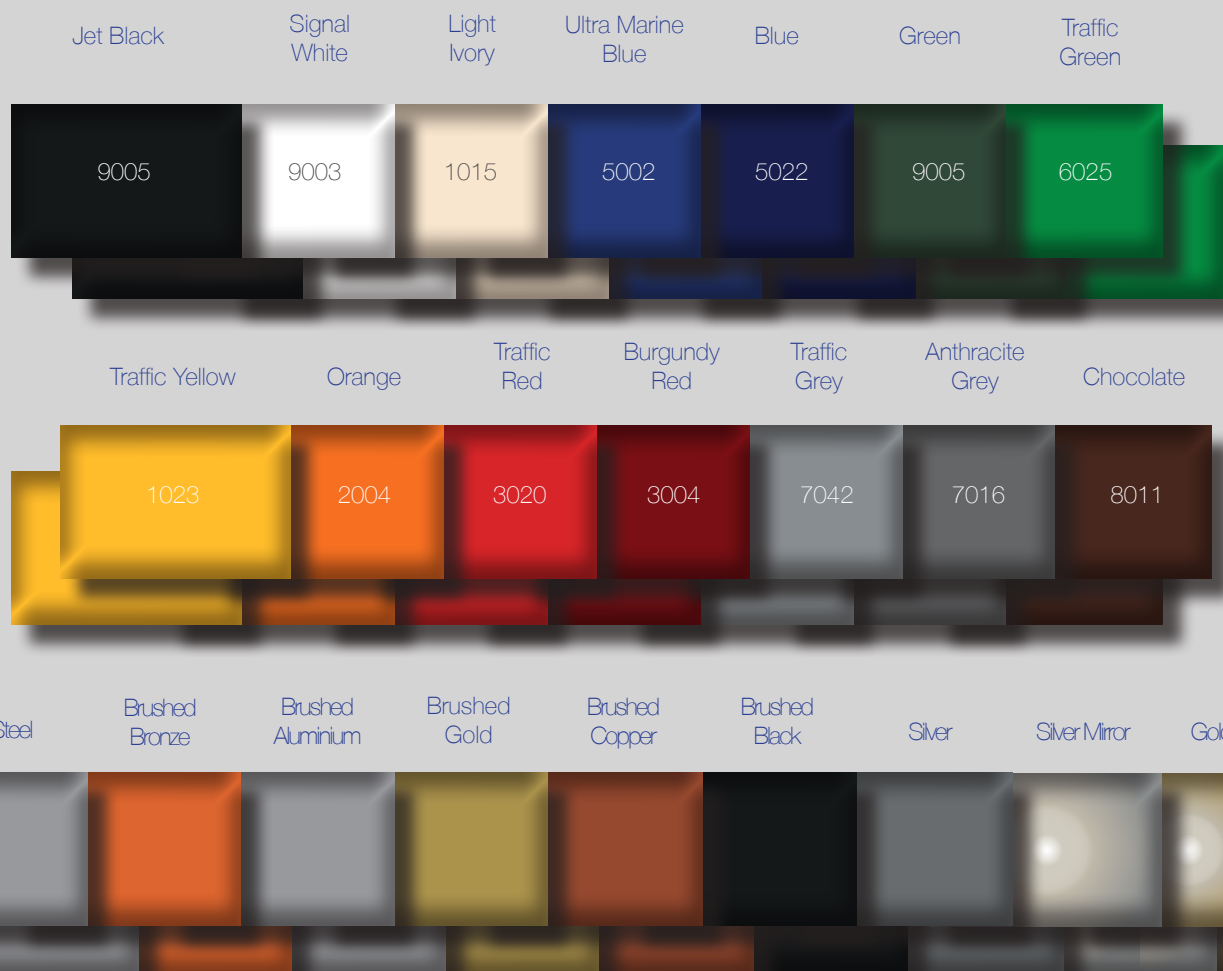
Easy to bend,
fold & form

Flat, smooth,
uniform surface

Premium quality ALUPANEL® composite panels feature two aluminum sheets sandwiching a polyethylene core. Available in one of the widest color ranges on the market, standard options include gloss or matte colors, brushed, metal and even mirror finishes.

Exceptional weight versus rigidity performance combined with a high quality finish makes them much easier to transport, handle and install than many other sheet materials. To ensure quality and safety, ALUPANEL is UL rated and classified as class A under ASTM-E84 for reaction to fire.

- ◆ Clean easy-peel protective film
- ◆ UV flatbed printable
- ◆ Flat, smooth, uniform surface
- ◆ Easy to clean
- ◆ UV resistant for outdoor use
- ◆ Rigid, lightweight panel
- ◆ UL Rated
- ◆ ASTM-E84 Class A



The only UK manufacturer of Aluminum Composite, for more information please see www.multipaneluk.com